

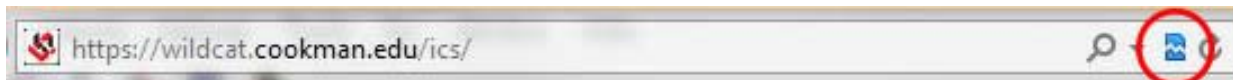
How to Turn Internet Explorer Compatibility View On for a Website

>> OPTION ONE <<

NOTE: If Internet Explorer recognizes a webpage that is not compatible, you will see the Compatibility View icon button on the Address bar.

1. Click on the un-highlighted Compatibility View icon button. The icon should turn blue.

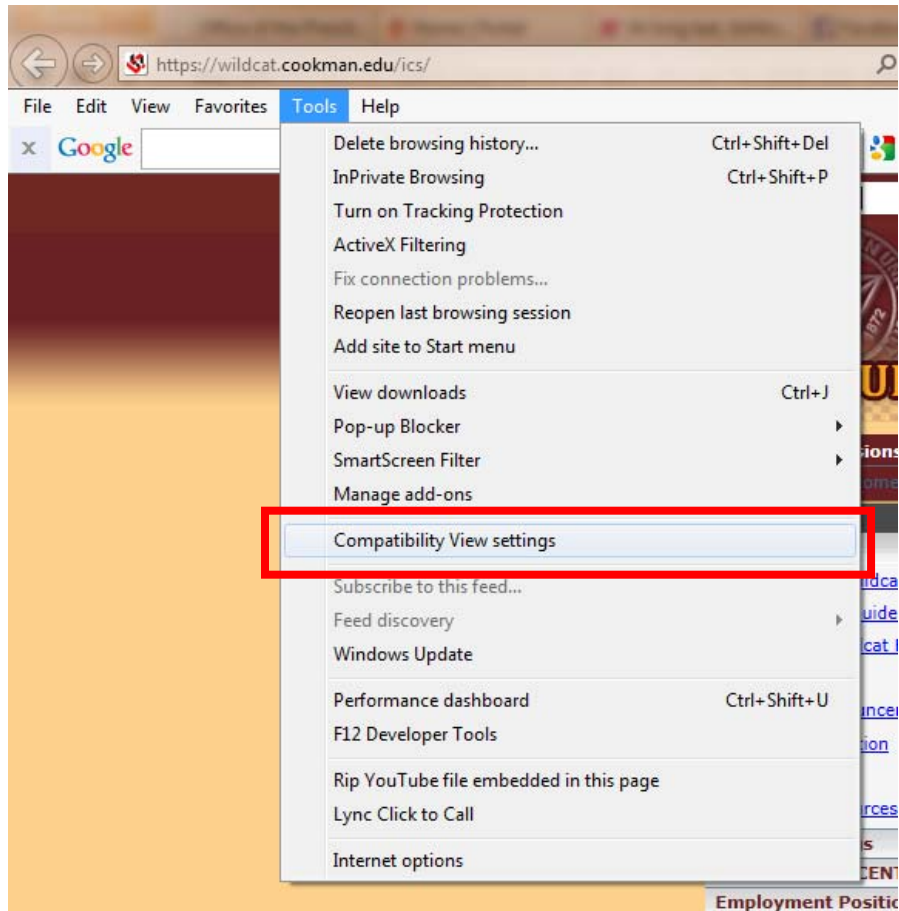
NOTE: The webpage will now reload with Compatibility View turned on.



2. If there is no Compatibility View icon button on the Address bar, please proceed to Option Two.

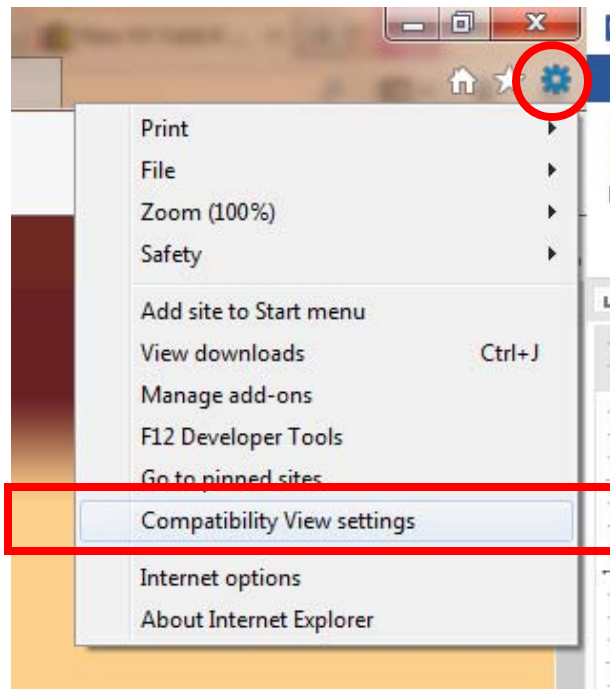
>> OPTION TWO <<

1. Click on the **Tools** Menu Bar (ALT+T) item and click **Compatibility View Settings**.



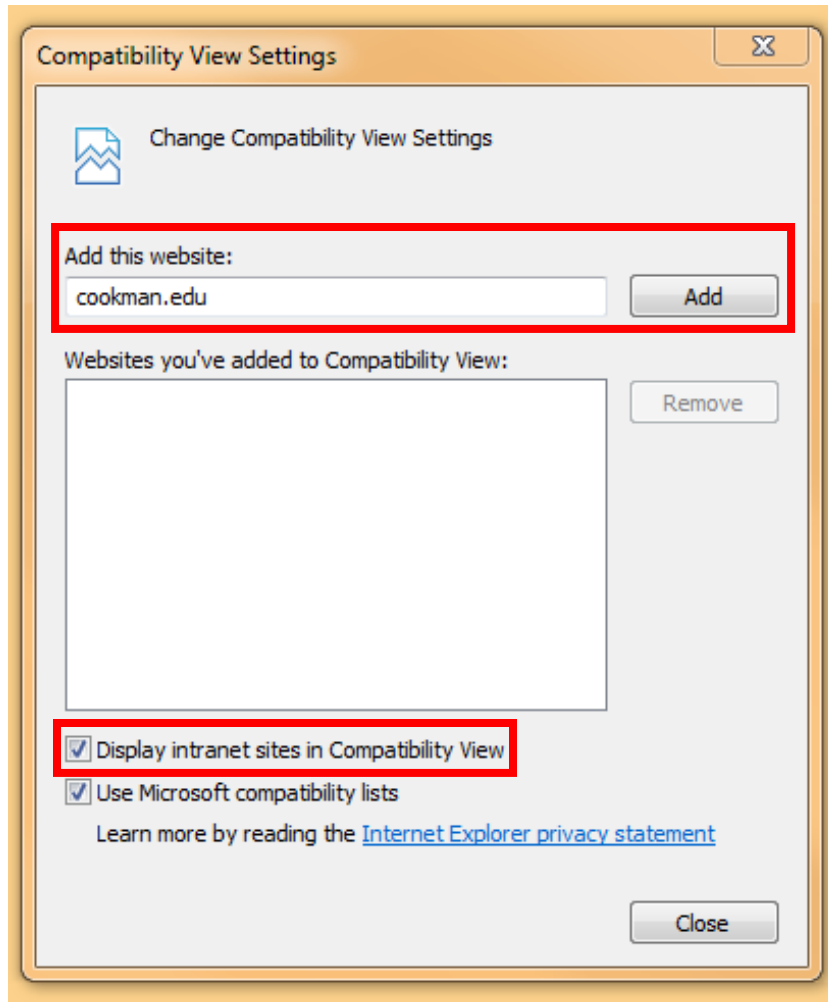
OR

1. Click on the **Tools** menu icon (ALT+X) then click **Compatibility View Settings**.



2. Type in **cookman.edu** as the address that you want to turn on Compatibility View for and click the **Add** button. Display intranet sites in Compatibility View should also be checked.

NOTE: The current webpage address will automatically be filled in for you. Just clear it if you want to add a different address instead.



3. Click **Close**.